

Specifications

Model	87512
Colour	White cover and base
Capacity	140ml/4.7 fl oz
Run Time	Up to 5 hours
LED Lights	Changing lights – Blue, Green, Purple & Red
Misting Modes	Continuous/Off
Modes Light	Rotating Lights, Stop On One Colour or Off
Coverage	Up to 1000 sq. ft.
Voltage	120V
Adapter Power	100-240V, 24V, 0.5A

Troubleshooting

SYMPTOM	CAUSE	SOLUTION
No mist	Unit is out of water	Add additional water.
No mist or little mist	Unit needs to be cleaned; oils are clinging to ceramic disc or sensor	Clean unit as advised in instructions with clean water and clean ceramic disc/sensor with brush or swab.
	Water level is higher than max level line	Clean unit and add water ½ way to fill line and additional water after getting mist. Remove excess water and restart the diffuser.
Blinking Lights	Water level indicator is dirty	Clean unit as advised, making sure to swab the sensor/disc inside the bottom of the unit.
Unit will not stop running even though empty	Unit is out of water	Clean unit as advised, making sure to swab the sensor/disc inside the bottom of the unit.
No misting and unit is spraying water	Water level indicator is dirty	Change to warmer water.

CAUTION: Keep away from children and pets.

nowfoods.ca/essential-oils

This diffuser has a 1-year manufacturer guarantee

Customer Service: 888-548-0040

DO NOT RETURN TO RETAILER

Manufactured for NOW Foods, 60108 USA
Imported & Distributed by/Importé et distribué par :
Puresource, Guelph, ON N1H 6J3 Canada nowfoods.ca

Code 87512
V 2023-07-26



Essential Oil Info

NOW® Essential Oils are genuine reflections of the botanicals from which they're derived. When properly diffused, these botanical extracts can encourage wellness, tranquility and even inspiration. Our essential oils are highly concentrated and identity verified to ensure quality. We use only fresh botanicals bursting with vitality and beneficial compounds. Strict attention to detail, meticulous extraction methods, and a focus on safety and purity are what set NOW® Essential Oils apart from other essential oils. We take the necessary steps to ensure our oils are brought to you in a manner that's scientifically and environmentally responsible.



For more information visit nowfoods.ca/essential-oils



Ultrasonic Cone Diffuser

Instructions & Care



nowfoods.ca



Essential Oil Recipes

Add the following oils to a diffuser and enjoy:

Balancing Blends

Daily Balance

2 drops of NOW® Geranium Oil
2 drops of NOW® Rose Absolute Oil
2 drops of NOW® Clary Sage Oil

Mind Ease

3 drops of NOW® Lavender Oil
3 drops of NOW® Peppermint Oil
3 drops of NOW® Chamomile Oil

Purifying Blends

Purifying Room

1 drop of NOW® Tea Tree Oil
1 drop of NOW® Grapefruit Oil
8 drops of NOW® Lemon Oil

Spring Cleaning

6 drops of NOW® Lemongrass Oil
3 drops of NOW® Lemon Oil
1 drop of NOW® Eucalyptus Oil

Uplifting Blends

Orange You Delightful

2 drops of NOW® Orange Oil
5 drops of NOW® Vanilla Concentrate Oil

Energizing

1 drop of NOW® Peppermint Oil
1 drop of NOW® Rosemary Oil
2 drops of NOW® Cinnamon Oil

Relaxing Blends

Peace of Mind

5 drops of NOW® Lavender Oil
3 drops of NOW® Chamomile Oil

Calming Night

3 drops of NOW® Cypress Oil
3 drops of NOW® Lavender Oil
3 drops of NOW® Marjoram Oil

Romance Blends

Love is in the Air

1 drop of NOW® Patchouli Oil
3 drops of NOW® Jasmine Absolute Oil
5 drops of NOW® Geranium Oil

Things are Just Rosey

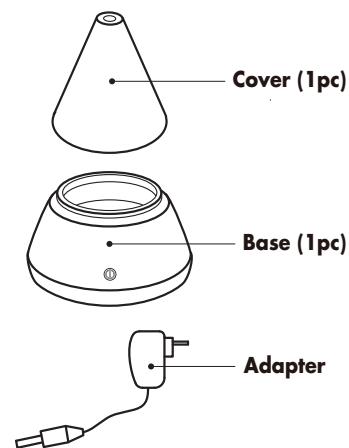
1 drop of NOW® Geranium Oil
10 drops of NOW® Rose Absolute Oil

Congratulations on your purchase of NOW® Solutions Ultrasonic Cone Oil Diffuser designed for indoor use only. Please read the instructions carefully before using.

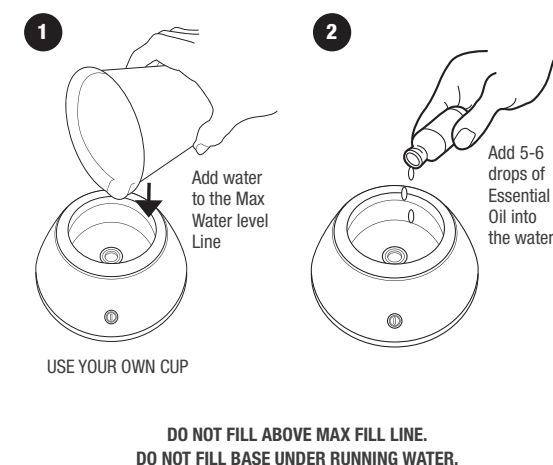
How it works

NOW® Solutions Ultrasonic Cone Oil Diffuser uses high frequency ultrasonic technology that vibrates cool water inside the unit creating an ultra fine mist into the air. When essential oils are added, they are immediately dispersed into the air providing healthful benefits and helping to ionize the air. It can be used in a bedroom, living room, office area or anywhere you want to create a relaxing environment.

What's included



How to add essential oil



How to operate

- Using your own cup, fill the base with luke warm (not cold) tap water up to the fill indicator line. DO NOT OVERFILL.
 - Do not use distilled or purified/filtered water.
 - Add about 5 or 6 drops (up to 10) of essential oils directly into the water.
- Replace the cover. Plug in your unit and turn it on.

BUTTON PRESSED	MISTING	LIGHTS
Once	On	Rotating Colours
Twice	On	Stop on one colour
Three Times	On	Off
Four Times	Off	Off

The unit will automatically shut off when the water level gets too low.

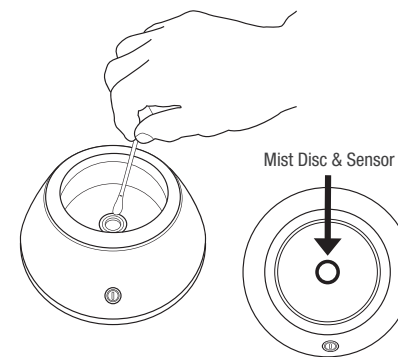
- That's it! Start enjoying the beautiful aromas your diffuser emits!

NOTE: Oil mist can damage wooden and painted surfaces; wipe up any residue quickly and often.

How to clean

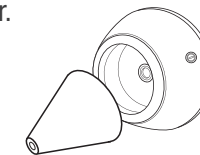
We recommend that you clean your NOW® Solutions Ultrasonic Cone Oil Diffuser every time you change oils. Oils are corrosive, and over time, they build up on the ceramic parts. To ensure long life for your diffuser, follow these simple steps:

- Rinse the base with clean water and wipe dry with a clean cloth.
- Use a cotton swab to gently clean the Mist Disc and Sensor.



Important note

If the unit is accidentally tipped over during operation, the water could flow into the inside chamber. Unplug the power and empty all the water. Set it aside in a ventilated place for 3 days & reuse.



Please read these instructions carefully before using. Manufacturer accepts no liability for damage caused by incorrect use of the NOW® Solutions Ultrasonic Cone Oil Diffuser.



⚠	1. Shut off and unplug the power before cleaning
⚠	2. Clean the unit by rinsing the water tank and wiping it dry with a clean cloth
⊘	3. Do not use detergents or abrasive agents to clean the diffuser unit
⚠	4. Clean unit when changing to a different oil
⚠	5. Use the original adapter provided by the manufacturer
⚠	6. If you don't use the device for a long time, unplug and pour water out
⊘	7. Never use steamed water or very cold water
⊘	8. Never touch water level sensor to avoid product hitting other objects
⊘	9. Never put your hand above the ceramic disc when product is working, as this could cause pain and damage to the machine
❗	10. Never wrap the adapter with a cloth or paper, etc. Otherwise, it cannot dissipate heat normally and may cause deformation and burn the membrane from a short circuit. Never touch the adapter with wet hands
⊘	11. Do not use other liquids except for water & drops of essential oil
⊘	12. Do not aim the device at walls, ceilings, furniture surfaces as excess moisture could cause water damage
❗	13. Do not take this unit apart exposing electrical parts
⚠	14. Never place on loose fabric that can block air flow and prevent the unit from misting and ventilating properly

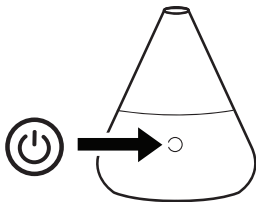
For more recipe ideas visit nowfoods.ca



Ultrasonic Cone Oil Diffuser

For maintenance and precautions please see instruction manual.

How to diffuse



Press the power button to begin.

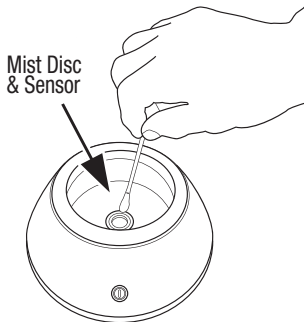
1st press for mist with rotating lights

2nd press for mist with stationary lights

3rd press for mist with no lights

4th press to turn everything off

How to clean



Using warm water or rubbing alcohol with a cotton swab, gently clean the mist disc and sensor located at the inside bottom of the base.

nowfoods.ca/essential-oils

This diffuser has a 1-year manufacturer guarantee

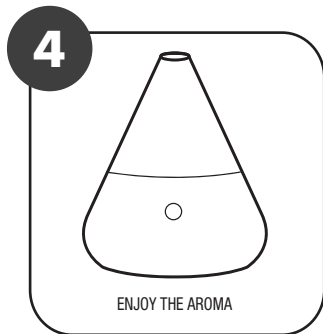
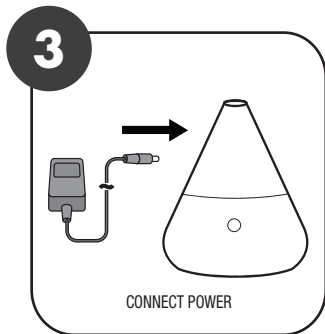
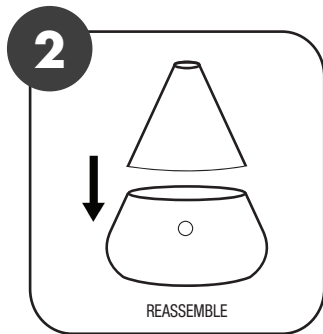
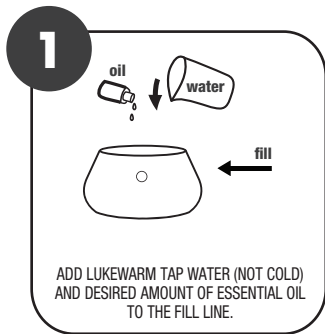
Customer Service: 888-548-0040

DO NOT RETURN TO RETAILER



Ultrasonic Cone Oil Diffuser

QUICK START ASSEMBLY



For maintenance and precautions
please see instruction manual.