

Specifications

Model	87521
Colour	Bamboo wood cover and base
Capacity	150ml/5 fl oz
Run Time	Up to 14 Hrs Intermittent / 7 Hrs Continuous
Features	Timer setting 1 Hr / 2 Hr, int/cont. 3 changing LED lights – Blue, Green, & Red
Coverage	1000 sq. ft.
Rated Power	12 W
Adapter Power	100-240V, 24V 0.5A

Troubleshooting

SYMPTOM	CAUSE	SOLUTION
No mist	Unit is out of water	Add additional water.
No mist or little mist	Unit needs to be cleaned; oils are clinging to ceramic disc or sensor	Clean unit as advised in instructions with clean water and clean ceramic disc/sensor with brush or swab.
	Water level is higher than max level line	Clean unit and add water ½ way to fill line and additional water after getting mist.
		Remove excess water and restart the diffuser.
Blinking Lights	Water level indicator is dirty	Clean unit as advised, making sure to swab the sensor/disc inside the bottom of the unit.
Unit will not stop running even though empty	Unit is out of water	Clean unit as advised, making sure to swab the sensor/disc inside the bottom of the unit.
No misting and unit is spraying water	Water level indicator is dirty	Change to warmer water.

CAUTION: Keep away from children and pets.

nowfoods.ca/essential-oils

This diffuser has a 1-year manufacturer guarantee
Customer Service: 888-548-0040
DO NOT RETURN TO RETAILER

Manufactured for NOW Foods, 60108 USA
Imported & Distributed by/Importé et distribué par:
Puresource, Guelph, ON N1H 6J3 Canada nowfoods.ca

Code 87487
V 2023-07-26



Essential Oil Info

NOW® Essential Oils are genuine reflections of the botanicals from which they're derived. When properly diffused, these botanical extracts can encourage wellness, tranquility and even inspiration. Our essential oils are highly concentrated and identity verified to ensure quality. We use only fresh botanicals bursting with vitality and beneficial compounds. Strict attention to detail, meticulous extraction methods, and a focus on safety and purity are what set NOW® Essential Oils apart from other essential oils. We take the necessary steps to ensure our oils are brought to you in a manner that's scientifically and environmentally responsible.



For more information visit nowfoods.ca/essential-oils.



Real Bamboo Diffuser

Instructions & Care





Essential Oil Recipes

Add the following oils to a diffuser and enjoy:

Balancing Blends

Daily Balance

- 2 drops of NOW® Geranium Oil
- 2 drops of NOW® Rose Absolute Oil
- 2 drops of NOW® Clary Sage Oil

Mind Ease

- 3 drops of NOW® Lavender Oil
- 3 drops of NOW® Peppermint Oil
- 3 drops of NOW® Chamomile Oil

Purifying Blends

Purifying Room

- 1 drop of NOW® Tea Tree Oil
- 1 drop of NOW® Grapefruit Oil
- 8 drops of NOW® Lemon Oil

Spring Cleaning

- 6 drops of NOW® Lemongrass Oil
- 3 drops of NOW® Lemon Oil
- 1 drop of NOW® Eucalyptus Oil

Uplifting Blends

Orange You Delightful

- 2 drops of NOW® Orange Oil
- 5 drops of NOW® Vanilla Concentrate Oil

Energizing

- 1 drop of NOW® Peppermint Oil
- 1 drop of NOW® Rosemary Oil
- 2 drops of NOW® Cinnamon Oil

Relaxing Blends

Peace of Mind

- 5 drops of NOW® Lavender Oil
- 3 drops of NOW® Chamomile Oil

Calming Night

- 3 drops of NOW® Cypress Oil
- 3 drops of NOW® Lavender Oil
- 3 drops of NOW® Marjoram Oil

Romance Blends

Love is in the Air

- 1 drop of NOW® Patchouli Oil
- 3 drops of NOW® Jasmine Absolute Oil
- 5 drops of NOW® Geranium Oil

Things are Just Rosey

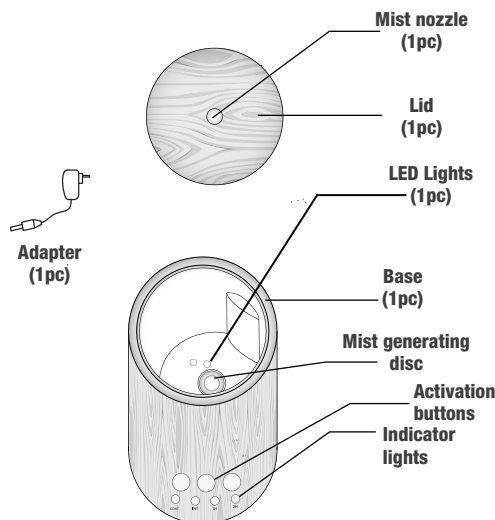
- 1 drop of NOW® Geranium Oil
- 10 drops of NOW® Rose Absolute Oil

Congratulations on your purchase of NOW® Solutions Real Bamboo Ultrasonic Oil Diffuser designed for indoor use only. Please read the instructions carefully before using.

How it works

NOW® Solutions Real Bamboo Ultrasonic Oil Diffuser uses high frequency ultrasonic technology that vibrates water inside the unit creating an ultra fine mist into the air. When essential oils are added, they are immediately dispersed into the air providing healthful benefits and helping to ionize the air. It can be used in a bedroom, living room, office area or anywhere you want to create a relaxing environment.

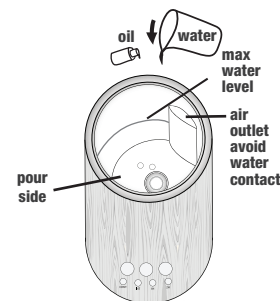
What's included



NOTE: Oil mist can damage wooden and painted surfaces; wipe up any residue quickly and often.

How to use

- 1 Plug the adapter cord into the base FIRST then plug the unit into the wall. Check inside all pieces for all parts, remove the lid.
- 2 Fill the base with 150 ml (5 fl. oz.) of room-temperature tap water. Then add 5 to 10 drops of your essential oil. Do not move once unit has been filled with water. Do not use distilled or purified/filtered water. Do not overfill past indication line.



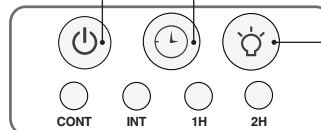
- 3 Replace the top. Press the power icon to begin.

How to operate

Press Power Button
1 Continuous operation
2 Intermittent operation
3 Turn unit OFF

Press Timer Button
1 1-Hour timer
2 2-Hour timer

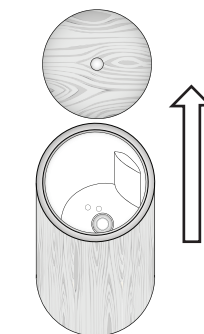
Press Light Button
1 Colour rotating lights
2 Fixed colour lights
3 Turn lights OFF



How to clean

We recommend that you clean your NOW® Solutions Real Bamboo Ultrasonic Oil Diffuser every time you change oils. Oils are corrosive, and over time they build up on the ceramic parts. To ensure long life for your diffuser, follow these simple cleaning and maintenance instructions:

Turn off the unit and disconnect the powerplug. Lift off the lid and and empty any water remaining into a sink.



- Only use clean water at room temperature to fill the water tank.
- Rinse the water tank and wipe it dry with a clean cloth every time you use a different type of essential oil.
- Use a damp cloth to clean the exterior of the unit.
- Use a cotton swab or brush to clean the ceramic disc.
- Keep water from entering the vent.
- Do not move once unit has been filled with water.
- Do not use detergents, solvents or abrasive agents to clean the diffuser unit.
- Disconnect the diffuser unit from power before cleaning.
- Use the diffuser unit on a dry and even surface.

Please read these instructions carefully before using. Manufacturer accepts no liability for damage caused by incorrect use of the NOW® Solutions Real Bamboo Ultrasonic Oil Diffuser.

Warning and cautions

No allowed actions

Strictly prohibited

⚠	1. Shut off and unplug the power before cleaning
⚠	2. Clean the unit by rinsing the water tank and wiping it dry with a clean cloth
⊘	3. Do not use detergents or abrasive agents to clean the diffuser unit
⚠	4. Clean unit when changing to a different oil
⚠	5. Use the original adapter provided by the manufacturer
⚠	6. If you don't use the device for a long time, unplug and pour water out
⊘	7. Never use steamed water or very cold water
⊘	8. Never touch water level sensor to avoid product hitting other objects
⊘	9. Never put your hand above the ceramic disc when product is working, as this could cause pain and damage to the machine
❗	10. Never wrap the adapter with a cloth or paper, etc. Otherwise, it cannot dissipate heat normally and may cause deformation and burn the membrane from a short circuit. Never touch the adapter with wet hands
⊘	11. Do not use other liquids except for water & drops of essential oil
⊘	12. Do not aim the device at walls, ceilings, furniture surfaces as excess moisture could cause water damage
❗	13. Do not take this unit apart exposing electrical parts
⚠	14. Never place on loose fabric that can block air flow and prevent the unit from misting and ventilating properly

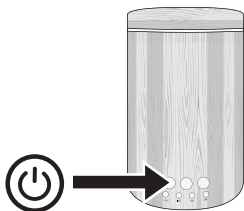
For more recipe ideas visit nowfoods.ca



Real Bamboo Ultrasonic Oil Diffuser

For maintenance and precautions please see instruction manual.

How to diffuse



Press the power icon to begin:

1st press for continuous mist

2nd press for intermittent misting

3rd press to power off the unit

To control lights press the light icon:

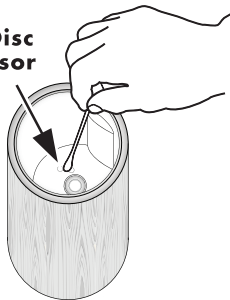
1st press for colour rotating lights

2nd press to select a colour

3rd press to turn lights off

How to clean

Mist Disc & Sensor



Using warm water or rubbing alcohol with a cotton swab, gently clean the mist disc and sensor located at the inside bottom of the base.

nowfoods.ca/essential-oils

This diffuser has a 1-year manufacturer guarantee

Customer Service: 888-548-0040

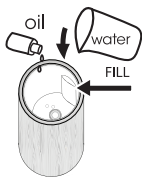
DO NOT RETURN TO RETAILER



Real Bamboo Ultrasonic Oil Diffuser

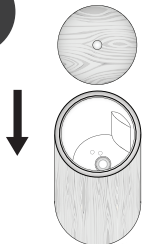
QUICK START ASSEMBLY

1



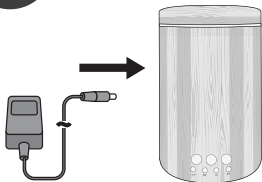
ADD ROOM TEMPERATURE TAP WATER AND RECOMMENDED AMOUNT OF ESSENTIAL OIL TO THE FILL LINE.

2



REASSEMBLE

3



CONNECT POWER

4



ENJOY THE AROMA

For maintenance and precautions
please see instruction manual.